

Labour News

20's plenty

When we've been talking to residents one of their main concerns is speeding traffic.

We believe that speeding is not only wrong but very dangerous especially to young and vulnerable members of the public. That's why Labour is to start campaigning to bring a 20mph speed limit to all our residential areas. A 20mph limit would greatly reduce the risk of serious accidents on our roads. Other councils have already introduced this lower speed limit and we think it's time Hampshire followed suit in Portchester.

You can help in our campaign by contacting us through our 'Better Portchester' survey overleaf. We look forward to hearing from you.



NHS cuts

More than 50,000 jobs are to disappear from the NHS according to a recent freedom of information response.

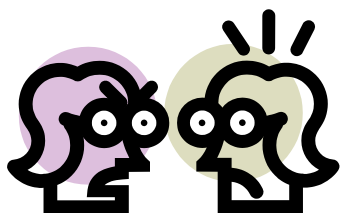
This reveals for the first time the extent of cuts by local health trusts as they struggle to save £20bn from their budgets.

Cuts brought in by the Tory / Lib Dem coalition will mean, in England alone, 24,000 posts will go in hospitals, another 10,000 will be lost in primary care trusts and 6,000 will disappear from mental health trusts. These losses included doctors, nurses and dentists as well as administrative posts.



Lib/Dems risk our open spaces

Lib / Dem councillors endangered our open spaces in Portchester by opposing the now approved development north of Fareham. By opposing this plan they risked planners giving permission to build on the last pieces of green space we have. Next time Lib/Dems oppose building in Portchester we should ask the obvious question - Why were you happy to risk these spaces then, but not now, or were you opposing for the sake of it?



What concerns you

We'd like to say thanks to all those many people who replied to our 'Better Portchester' survey in the last *Labour News*.

Top items were speeding, road & path repairs, street cleaning and weekly rubbish collection. If you have any concerns then please complete the survey overleaf—we'll do what we can to help.

Portchester split in two

The Boundary Commission's review of Parliamentary constituencies has resulted in Portchester being split in two! For the first time part of Portchester would join Portsmouth. Portchester East Ward would be part of Portsmouth West Constituency with Portchester West Ward being in a new constituency of Fareham & Horndean. Portchester is one community and we think it should remain in a single constituency.

These are the commission's initial proposals. We will be pressing for Portchester to stay in one constituency. If you would like to add your opinion of the changes then write to: The Boundary Commission for England, 35, Great Smith Street, London SW1P 3BQ.



In brief

One in ten police officers will be axed under the Tory led government's spending cuts. Figures released by Her Majesty's Inspector of Constabulary show 16,200 frontline police officers, will go as forces struggle under a 20% budget cut.

The government has gone back on its promise to force councils to reinstate weekly rubbish bin collections.

The TV signal will be switching to digital early next year. A scheme to help make it easier for elderly and disabled people has been launched. You can call the Changeover Help Scheme on 0800 40 85 900.

All Hampshire councils have backed a scheme called Insulate Hampshire. The scheme offers loft and cavity wall insulation at under £100* each. Some in certain circumstances will benefit from free insulation including those over 70 years of age. For more information phone 0800 952 0037.

*Three bedroom semi detached house.

Winter is on it's way. If you see a street light out please contact Hampshire County Council on 0800 506060.

Don't lose your vote. You should have received a registration form in August/September. There will be local elections next May and a vote for a police commissioner in November next year. Ensure you have your say. For more details and to register contact Fareham Borough Council on 01329 824587.

Three ways to get in touch

e: rryan@farehamlabour.org.uk w: www.farehamlabour.org.uk

What would you like to see done to make Portchester better? Complete and send back

- 20 mph speed limit
- repair road & path potholes
- better street cleaning
- weekly rubbish collection

If there were an election tomorrow who would you vote for?

- Labour Tory Lib Dem Other

Please send replies to: Richard Ryan, The Editor:

rryan@farehamlabour.org.uk

Name _____

Address _____

Phone _____

Email _____

Mobile _____



Promoted by R Ryan, 17 Laverock Lea, Portchester PO16 8DA on behalf of Portchester Labour Party at the same address.
Printed by Imprint Design & Print, Unit 1-3, Enterprise Estate, Station Road, Ash Vale, GU12 5QJ